



# Everyone welcome!

Explore our cutting-edge research, and meet the amazing people behind it.

Browse interactive displays, ask questions and discover how you can get involved.

[annerowlingclinic.org/open-evening-2026](https://annerowlingclinic.org/open-evening-2026)

## Research Open Evening

Weds 10<sup>th</sup> June 2026

17:00-19:00

Anne Rowling Clinic, Edinburgh BioQuarter, EH16 4SB  
free, drop-in event (no need to book)

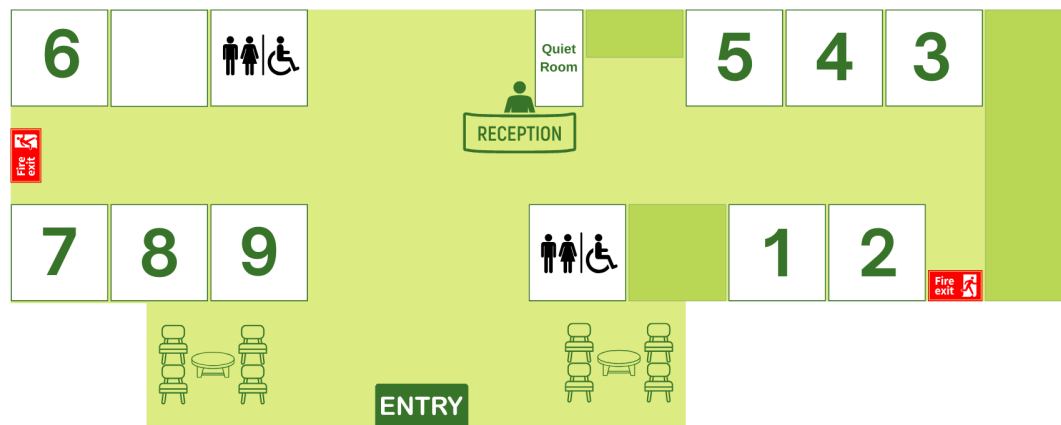


THE UNIVERSITY  
of EDINBURGH



Please feel free to explore at your leisure and visit the rooms that interest you most. Let us know if you're interested in signing up for any studies!

If you have any feedback on this event please tell a member of staff, or email [anne.rowling.clinic@ed.ac.uk](mailto:anne.rowling.clinic@ed.ac.uk). Thanks.



Room 1  
The eye as a window to the brain

Meet our ophthalmology research team and learn what retinal thickness teaches us about neurological conditions.

Room 6  
Stem cells & Lab tours

Curious how we turn a blood donation into brain cells? Chat to our lab scientists and reserve your spot for a guided lab tour (limited places / first-come, first-served).

Room 2  
Parkinson's research

Speak to clinicians specialising in Parkinson's research and find out about how you could get involved.

Room 7  
Gait analysis

Find out how hi-tech measurement of the way you walk can be used to monitor neurological conditions.

Room 3  
MND clinical trials

MND-SMART, now the largest MND drugs trial in Europe, and other research opportunities for people with MND.

Room 8  
Digital health lab

We're harnessing the potential of everyday technology and machine learning to support diagnosis and monitoring.

Room 4  
MS clinical trials

Find out more about 'next generation' clinical drugs trials Horizon, Autolus and Octopus.

Room 9  
FutureMS

About to enter its 10<sup>th</sup> year, FutureMS is our long-term research project that is tracking the MS of over 400 people across Scotland.

Room 5  
PrecisionMS & Microbiome

Two key MS research studies: using ultra-sensitive techniques to monitor MS, and the role of the gut microbiome in MS.

Reception  
Refreshments & Fundraise Your Way

Stop by for a cuppa and a biscuit, relax and chat. Find out about how to fundraise for the Anne Rowling Clinic.

This programme may be subject to change if there is unavoidable staff absence.  
Photographs and videos may be taken at this event, which may be used in print or online to promote the Anne Rowling Clinic and University of Edinburgh. If you have any concerns, please speak to a member of staff.  
The University of Edinburgh is a charitable body, registered in Scotland, with registration number SC005336.